

FACE MASK DETECTION USING OPEN COMPUTER VISION

Prof. Kamalakanta Shaw - Faculty at Gandhi Institute For Technology, CSE Dept.
(Affiliated to Biju Patnaik University of Technology)

Prasanjeet Mohanty - Student at Gandhi Institute For Technology, CSE Dept. (Affiliated to
Biju Patnaik University of Technology)

Bibhu Prasad Panda - Student at Gandhi Institute For Technology, CSE Dept. (Affiliated to
Biju Patnaik University of Technology)

Sishir Kumar Rout - Student at Gandhi Institute For Technology, CSE Dept. (Affiliated to
Biju Patnaik University of Technology)

Abstract

The novel Coronavirus had brought a new normal life in which the social distance and wearing of face masks plays a vital role in controlling the spread of virus. But most of the people are not wearing face masks in public places which increases the spread of viruses. This may result in a serious problem of increased spreading. Hence to avoid such situations we have to scrutinize and make people aware of wearing face masks. Humans cannot be involved for this process, due to the chance of getting affected by corona. Hence here comes the need for artificial intelligence(AI), which is the main theme of our project. Our project involves the identification of persons wearing face masks and not wearing face masks in public places by means of using image processing and AI techniques and sending alert messages to authority persons. The object detection algorithms are used for identification of persons with and without wearing face masks which also gives the count of persons wearing mask and not wearing face mask.

Keywords – Face mask detection, Social Distance, Detection Module, Face detection Module, Distance Management Module and Reports Module.

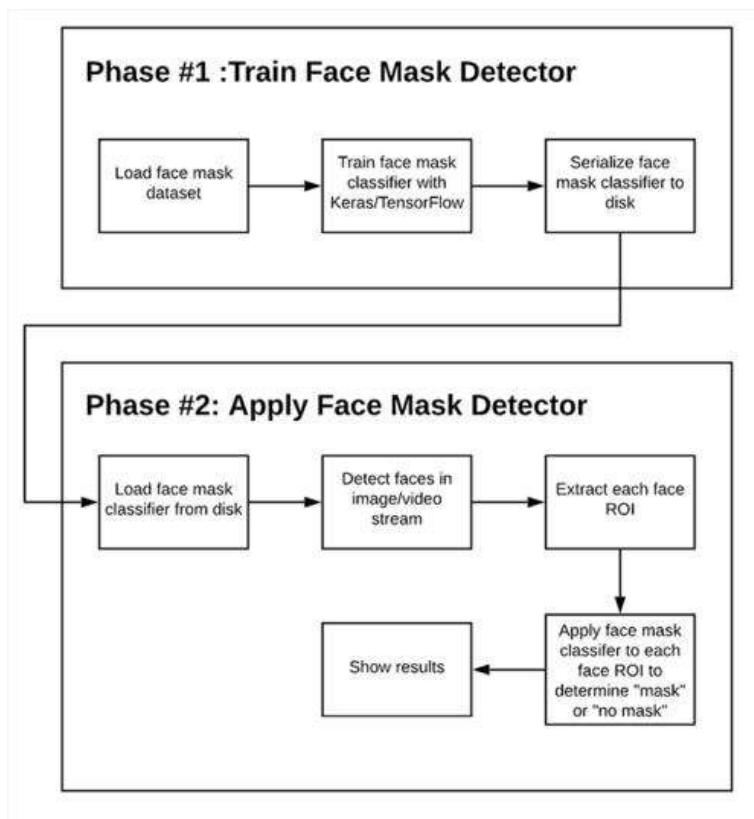
Introduction

The novel coronavirus covid-19 had brought a new normal life. India is struggling to get out of this virus attack and the government implemented lockdown for the long way. Lockdown placed a pressure on the global economy. So the government gave relaxations in lockdown. Declared by the WHO that a potential speech by maintaining distance and wearing a mask is necessary. The biggest support that the government needs after relaxation is social distancing

and wearing of masks by the people. But many people are getting out without a face mask this may increase the spread of covid-19. Economic Times India has stated that " Survey Shows that 90 percent Indians are aware, but only 44 percent wearing a mask ". This survey clearly points that people are aware but they are not wearing the mask due to some discomfort in wearing and carelessness. This may result in the easy spreading of covid-19 in public places. The world health organisation has clearly stated that until vaccines are found the wearing of masks and social distancing are key tools to reduce spread of virus. So it is important to make people wear masks in public places. In densely populated regions it is difficult to find the persons not wearing the face mask and warn them. Hence we are using image processing techniques for identification of persons wearing and not wearing face masks. In real time images are collected from the camera and it is processed in Raspberry Pi embedded development kit. The real time images from the camera are compared with the trained dataset and detection of wearing or 1 not wearing a mask is done. The trained dataset is made by using machine learning technique which is the deciding factor of the result. The algorithm created by means of using a trained dataset will find the persons with and without wearing face masks.

SYSTEM ARCHITECTURE

FLOW CHART PRESENTATION



FLOW CHART PRESENTATION

Modules Description

The Modules involved are

1. Data collecting
2. Pre-processing
3. Split the data
4. Building the model
5. Testing the model

1.Data collecting

The development of the Face Mask Recognition model begins with collecting the data. The dataset train data on people who use masks and who do not. The model will differentiate between people wearing masks and not.

For building the model, this study uses 1.916 data with mask and 1.930 data without a mask. At this step, the image is cropped until the only visible object is the face of the object.

The next step is to label the data. The data which has been collected labeled into two groups; with and without a mask. After the data has been labeled, it is grouped into those two groups. The example of the data is as below

2. Pre-processing

The pre-processing phase is a phase before the training and testing of the data. There are four steps in the pre-processing which are resizing image size, converting the image to the array, pre-processing input using MobileNetV2, and the last is performing hot encoding on labels.

The resizing image is a critical pre-processing step in computer vision due to the effectiveness of training models. The smaller size of the image, the better the model will run. In this study, the resizing an image is making the image into 224×224 pixels.

The next step is to process all the images in the dataset into an array. The image is converted into the array for calling them by the loop function. After that, the image will be used to pre-process input using MobileNetV2.

And the last step in this phase is performing hot encoding on labels because many machine learning algorithms cannot operate on data labeling directly. They require all input variables and output variables to be numeric, including this algorithm. The labeled data will be transformed into a numerical label, so the algorithm can understand and process the data.

3. Split the Data

After the pre-processing phase, the data is split into two batches, which are training data namely 75 percent, and the rest is testing data. Each batch is containing both of with-mask and without-mask images.

4. Building the Model

The next phase is building the model. There are six steps in building the model which are constructing the training image generator for augmentation, the base model with MobileNetV2, adding model parameters, compiling the model, training the model, and the last is saving the model for the future prediction process.

5. Testing the Model

To make sure the model can predict well, there are steps in testing the model. The first step is making predictions on the testing set. The result for 20 iterations in checking the loss and accuracy when training the model is shown in Table 1.

Table I. Iteration of checking the loss and accuracy

Epoch	Loss	Accuracy	Val loss	Val acc
1/20	0.5163	0.7434	0.4009	0.8260
2/20	0.2881	0.8876	0.3050	0.8675
3/20	0.2423	0.9129	0.3091	0.8649
4/20	0.2225	0.9047	0.1917	0.9195
5/20	0.1772	0.9343	0.2394	0.8922
6/20	0.1651	0.9382	0.1720	0.9247
7/20	0.1550	0.9419	0.2695	0.8922
8/20	0.1296	0.9541	0.2764	0.8922
9/20	0.1510	0.9456	0.3226	0.8779
10/20	0.1363	0.9497	0.2606	0.8974
11/20	0.1180	0.9583	0.2140	0.9065
12/20	0.1204	0.9596	0.3547	0.8766
13/20	0.1065	0.9632	0.1792	0.9195
14/20	0.1189	0.9560	0.3814	0.8727
15/20	0.1286	0.9524	0.3104	0.8831
16/20	0.1081	0.9622	0.2735	0.8948
17/20	0.1074	0.9570	0.2102	0.9143
18/20	0.1084	0.9576	0.2578	0.8974
19/20	0.1068	0.9593	0.2178	0.9117
20/20	0.0915	0.9685	0.2502	0.9052

From Table 1, we can see that the accuracy is increasing start on the second epoch, and loss is decreasing after it. The table then can be shown in the graph shown in Figure 2.

When the accuracy line is being stable, it means that there is no need for more iteration for increasing the accuracy of the model. So then, the next step is making the model evaluation as shown in Table 2.

Table II. Model Evaluation

	Precision	Recall	F1-Score	Support
With mask	0.98	0.83	0.90	384
Without mask	0.85	0.98	0.91	386
Accuracy			0.91	770
Macro avg	0.92	0.90	0.90	770
Weighted avg	0.92	0.91	0.90	770



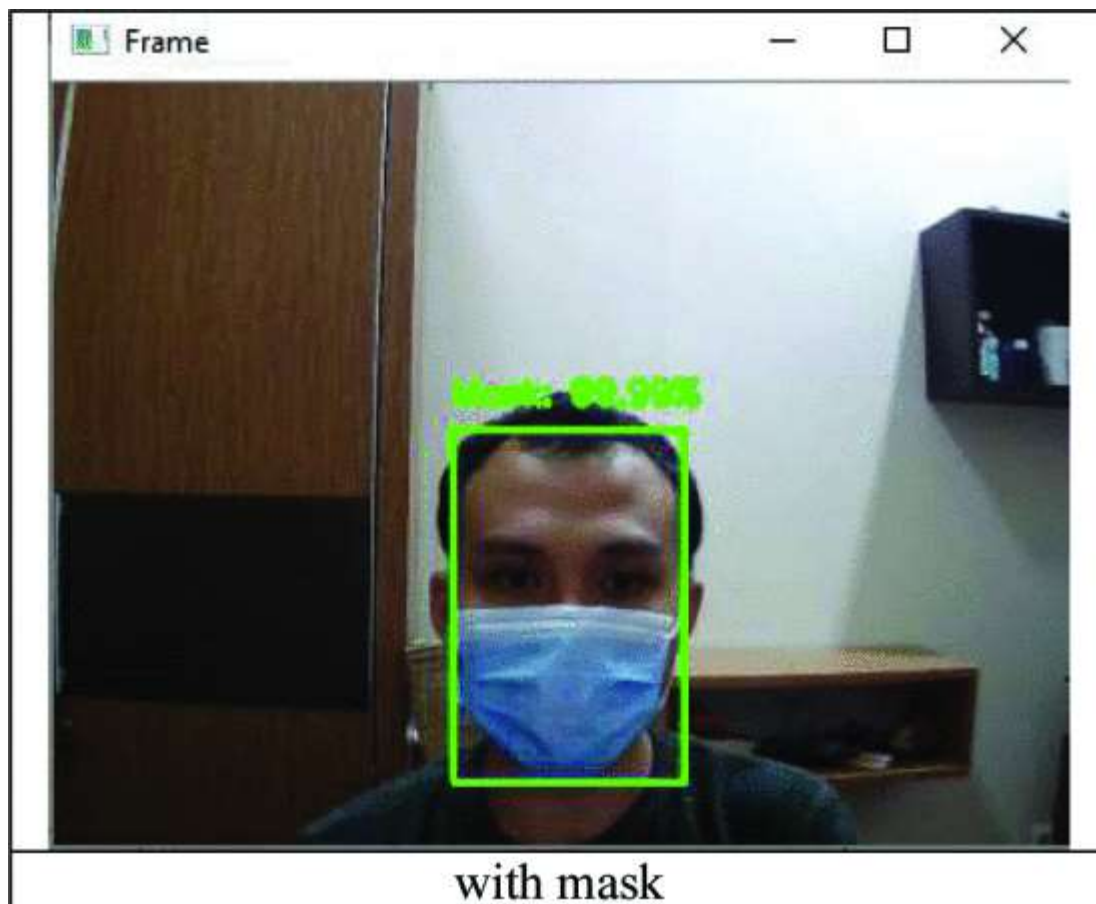
Fig. 2.

Graph of Training Loss and Accuracy

6. Implementing the model

The model implemented in the video. The video read from frame to frame, then the face detection algorithm works. If a face is detected, it proceeds to the next process. From detected frames containing faces, reprocessing will be carried out including resizing the image size, converting to the array, pre-processing input using MobileNetV2.

The next step is predicting input data from the saved model. Predict the input image that has been processed using a previously built model. Besides, the video frame will also be labeled that the person is wearing a mask or not along with the predictive percentage. Figure 3 is an example of implementing the model.



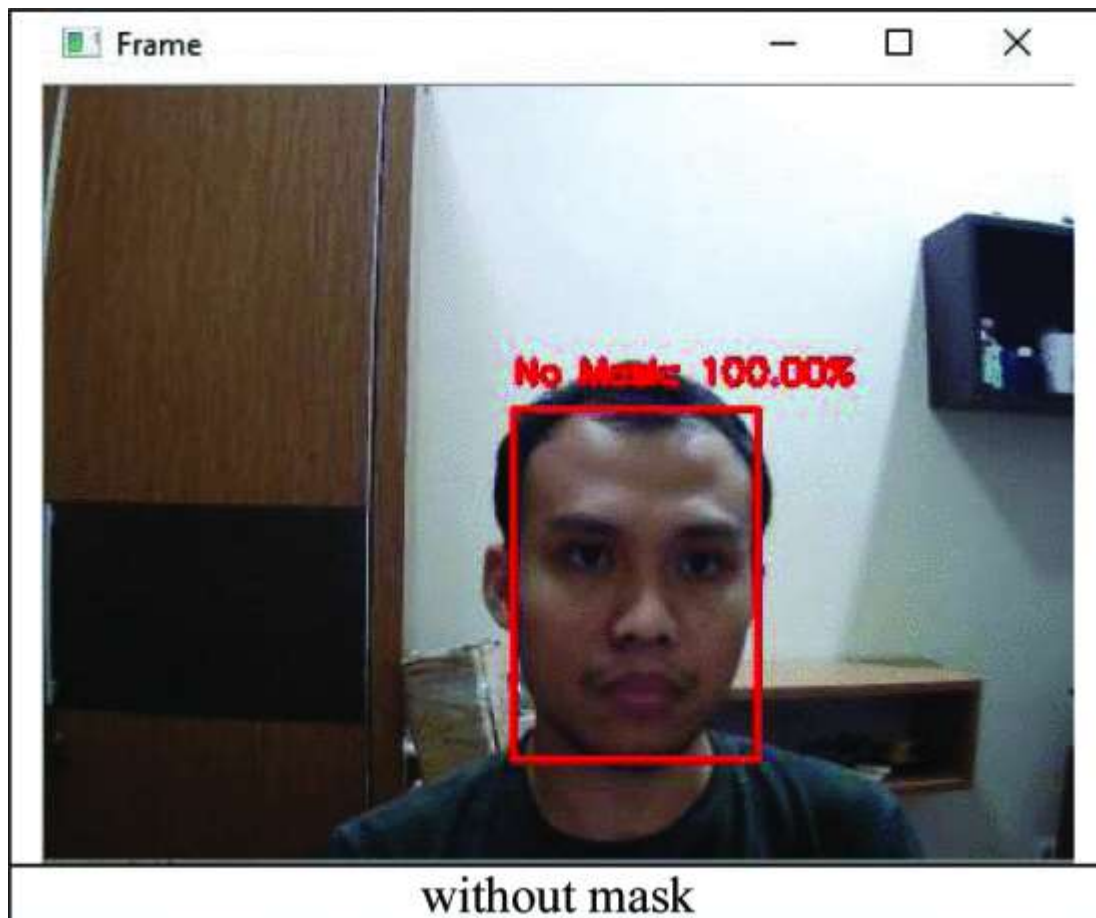


Fig. 3.

Result of Predicting input data

B. Face Mask Detection in Regional Result

The model applied to the image obtained from various sources in 25 cities in Indonesia. The cities were chosen based on data availability.

After applying the face recognition model to the dataset, the percentage of people not using a face mask in a public place was revealed. The percentage of people in the cities with the top five highest and the lowest percentage is shown in Table 3 and Table 4.

Table III. Five Cities with the Highest Percentage

No	City	Percentage
1	Jambi	82,76
2	Tangerang Selatan	80,53
3	Pangkalpinang	79,37
4	Sabang	79,20
5	Jakarta Barat	78,92

Table IV. Five cities with the lowest percentage

No	City	Percentage
1	Surabaya	64,14
2	Lubuk Linggau	65,42
3	Jakarta Pusat	66,91
4	Kupang	67,78
5	Malang	67,95

From Table 4, as we can see there are two cities in Jawa Timur which have categorized into the five lowest percentage of people using a face mask. While Jawa Timur, these days has known as the province in Indonesia which has a high case of COVID-19.

Furthermore, [13] explain that to assess the validity of the measurement which is the percentage of people wearing a face mask in a public place by the cities, it can be correlated with another valid measurement or index.

As shown in Table 5, this study correlates the percentage with the vigilance index of COVID-19 published by the kawalcovid19 team. This step needs to be done because the study only covers and captures the image from particular places, so there will be a probability of response burden on specific population segmentation.

Table V. Bivariate Correlation of The Percentage to the Vigilance Index

The percentage of People Wearing Face Mask in the Cities	Vigilance Index of COVID-19	
	Peason Correlation	-0,62*
	Sig. (2 tailed)	0,000

Based on the Table 5, the percentage from the face recognition model and the vigilance index of COVID-19 have strong enough, positive, and significant correlation. The pattern of the percentage has a negative correlation which means the lower percentage, the more people in the city need to be vigilant or cautious of COVID-19 transmission.

Actually, the main reason why people do not wear a face mask in the public place is not just because of their caution to the COVID-19, but also the economic condition of people and the face mask supply in the community [4], [6]. This reason can be the next concern for the authorities to mitigate further intervention in the community.

For the authorities who concern about the face mask supply, if the medical face mask is limited in some places, a cloth face mask can be the solution to be mass-produced as recommended by the CDC [14]. A face mask that is made of the cloth can be produced in an easy way. It also can be made at home or made by a home-worker tailor and also can be reused after washing. Furthermore, the authorities can control the safety and minimum requirements of the face mask through public education [15].

Moreover, the data indicates that the percentage of people using a face mask in the cities varies among the provinces. There is a city in DKI Jakarta which has the five highest percentages but also there is a city which categorized into the five lowest percentages.

It means that the distribution of the people wearing facemask is uneven between the cities. When the resources are limited, the model in this study can be used to prioritize which city has a low percentage, especially for the province or district which has a regulation to wear a face mask in the public place, such as DKI Jakarta which has Pergub Nomor 2 Tahun 2020 in [16].

In the research, [17] shows that the model which can produce a percentage of people using face mask also can be good for evaluation. It can motivate people to take action and evaluate their awareness to impede the spread of the virus in their community.

Conclusion and future scope

In conclusion, this study presents a model using machine learning for face mask detection. After the training, validation, and testing phase, the model can provide the percentage of people using face mask in some cities with high accuracy.

In the name of the statistical organization that needs to move quickly to adopt and take advantage of machine learning and new digital data resources, this study can be an easy move for authorities to use more unstructured data resources for more data-based mitigation, evaluation, prevention, and action planning against COVID-19.

REFERENCES

1. Ariyanto, Mochammad & Haryanto, Ismoyo & Setiawan, Joga & Muna, Munadi & Radityo, M.. (2019). Real-Time Image Processing Method Using Raspberry Pi for a Car Model. 46-51.
2. V. K. Bhanse and M. D. Jaybhaye,(2018) "Face Detection and Tracking Using Image Processing on Raspberry Pi," 2018 International Conference on Inventive Research in Computing Applications (ICIRCA), Coimbatore, India, pp. 1099-1103.
3. A. Das, M. Wasif Ansari and R. Basak, (2020) "Covid-19 Face Mask Detection Using TensorFlow, Keras and OpenCV," 2020 IEEE 17th India Council International Conference (INDICON), New Delhi, India, pp. 1-5.
4. M. S. Islam, E. Haque Moon, M. A. Shaikat and M. Jahangir Alam, (2020) "A Novel Approach to Detect Face Mask using CNN," 2020 3rd International Conference on Intelligent Sustainable Systems (ICISS), Thoothukudi, India, pp. 800-806.
5. Joseph Redmon, S. D. (2016) "You Only Look Once(YOLO) Unified, Real Time Object Detection" IEEE